



CENTRALIZED TAILGATE LOCK SYSTEM FOR : VOLKSWAGEN Amarok 2010+

1./ Please check you have all the required parts

before starting installation :

- 1 X baseplate and actuator kit
- 1 X wiring loom
- 8-10 X cable ties
- 2 X scotch locks – please note that soldering is recommended
- 1 X convoluted tubing – to protect wiring harness

2./ You will need the following tools :

- Screwdriver (to remove tailgate panel)
- Metric socket set (to remove tailgate handle)
- Soldering equipment
- Pliers (to crimp scotch lock wire connectors – optional)

3./ Open tailgate :

Undo 10 screws and remove metal panel to allow access into the inside of the tailgate.



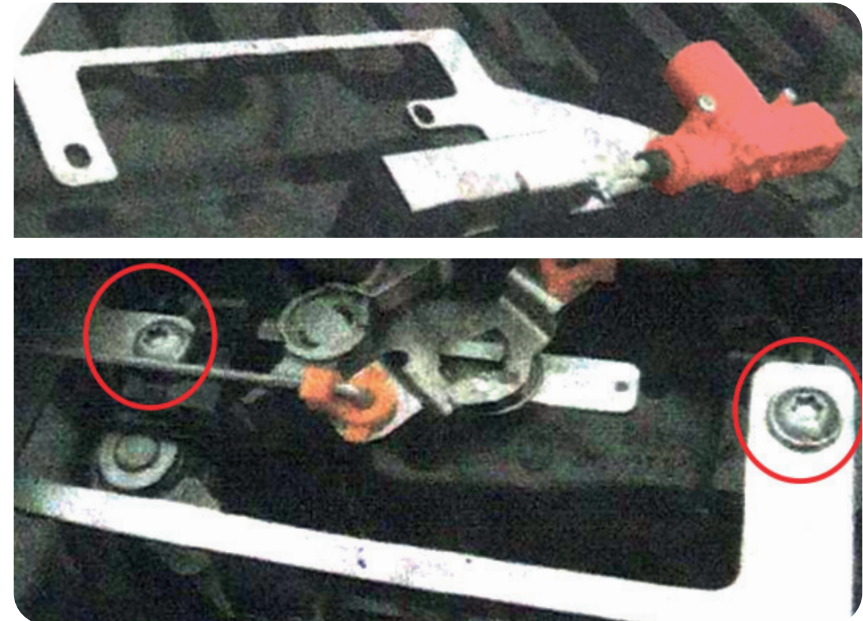


CENTRALIZED TAILGATE LOCK SYSTEM FOR : VOLKSWAGEN Amarok 2010+

4./ Remove the two bolts that hold the tailgate handle into the tailgate. Unclip the locking rod.



5./ Install the base plate and actuator kit using the bolts removed in step 4.

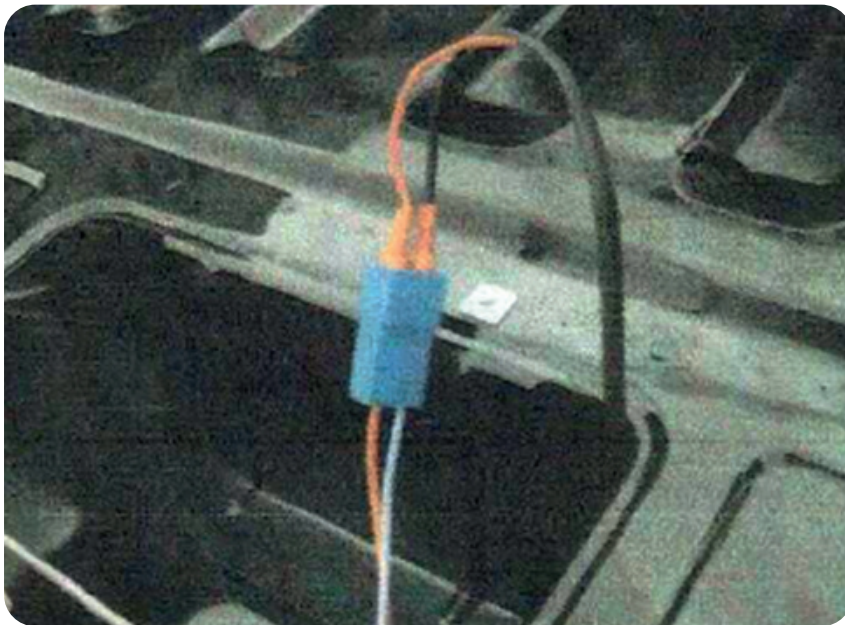




CENTRALIZED TAILGATE LOCK SYSTEM FOR : VOLKSWAGEN Amarok 2010+

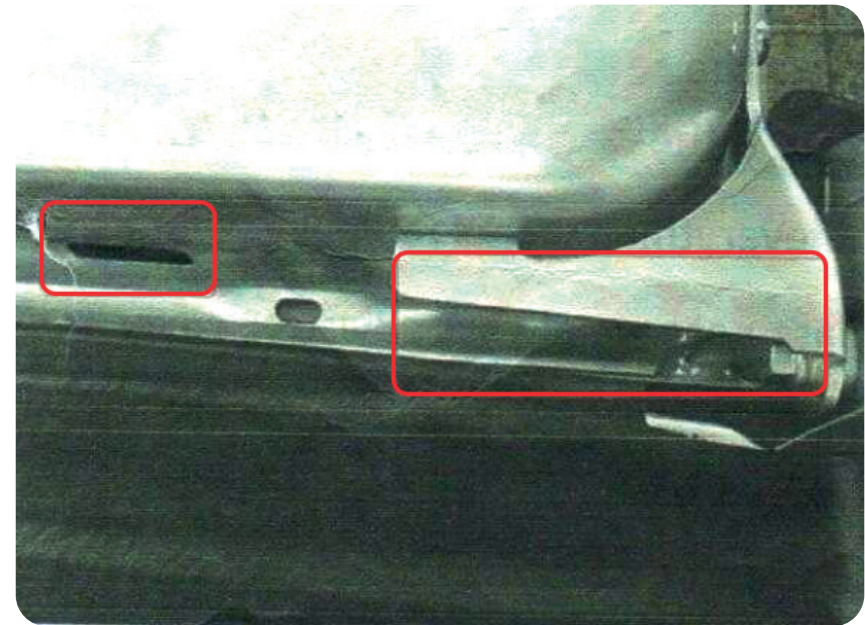
6./ Connect wiring loom to the actuator.

RED to Red & **BLACK to Blue**



7./ Feed Cables out of tailgate and strap tight using cable ties.

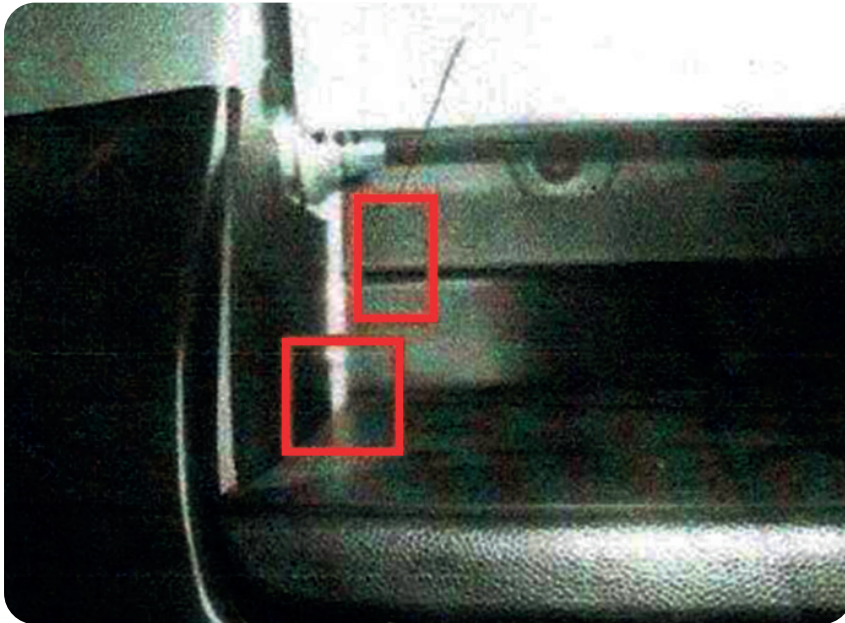
Feed out towards the side the fuel filler cap is.



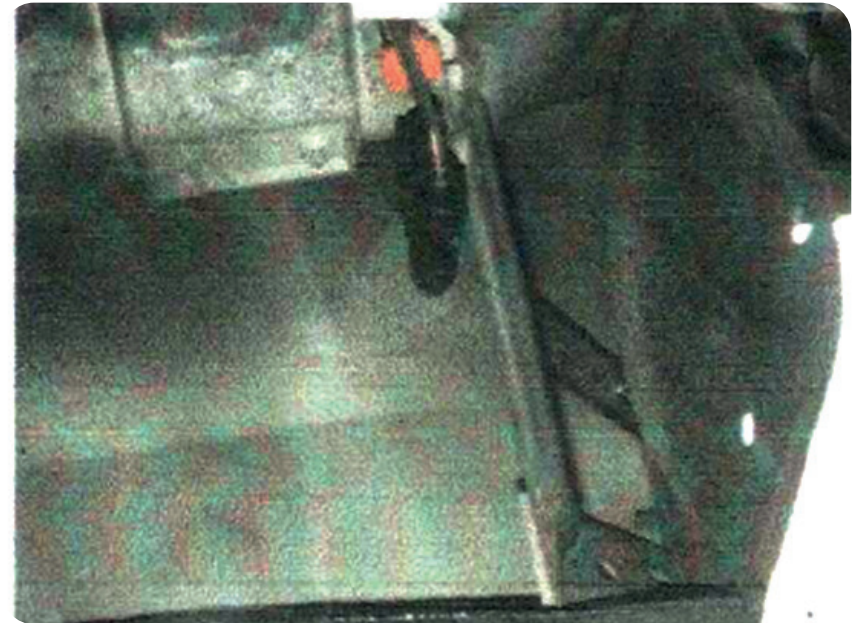


CENTRALIZED TAILGATE LOCK SYSTEM FOR : VOLKSWAGEN Amarok 2010+

8./ Feed cable through bumper, either drill a small hole or you can squeeze the cable through a gap on the left side of the bumper. Use the plastic sheaving to protect the wire.



9./ Connect the wiring loom to the vehicle's central locking. This is found on the under side between the wheel arch and back of truck.





CENTRALIZED TAILGATE LOCK SYSTEM FOR : VOLKSWAGEN Amarok 2010+

10./ Connect cable using the scotch locks (or solder)
please ensure the cable get a good connection.

Connect **RED** to **PURPLE**
Connect **BLACK** to **BROWN**

For new Truck with different coloured wires.

Connect **RED** to **YELLOW**
Connect **BLACK** to **WHITE**



11./ Test the kit by clicking the central locking and checking
that the tailgate locks and unlocks.

Don't click continuously since the motor may over heat and fail.
If everything works, replace the tailgate cover.



**// SJS Pro recommends that installation
is done by a qualified auto electrician.
Any electrical faults due to improper
installation will not be warranted
by SJS Pro Products Co. Ltd. //**

SJS Pro-Products Co.,Ltd. Latkrabang Estate Export Processing Zone 2,
No.10 Chalong Krung 31 Road, Lamplatiw Sub-District, Latkrabang District,
Bangkok 10520 Thailand. www.sjscanopy.com