



CENTRALIZED TAILGATE LOCK SYSTEM FOR : FORD Ranger T6

1./ Please check you have all the required parts

before starting installation :

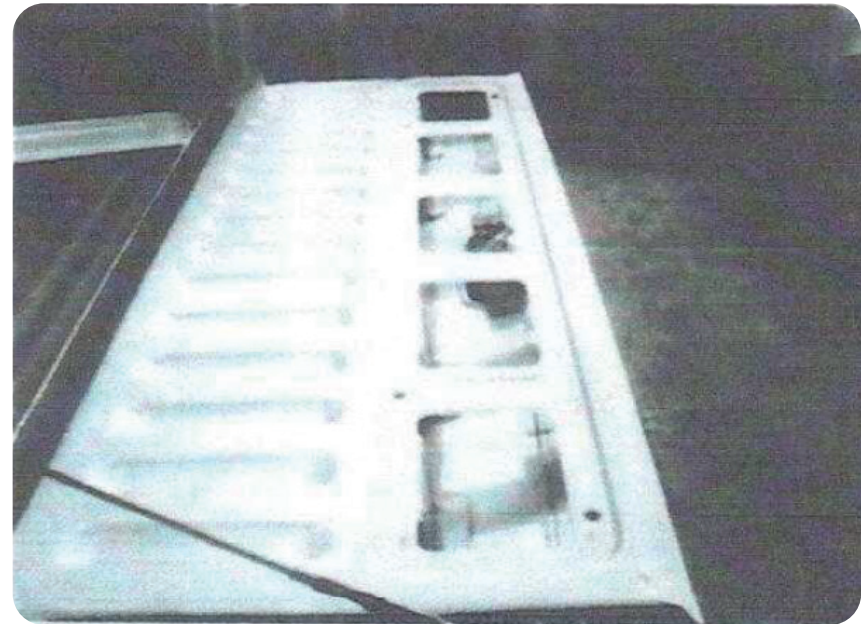
- 1 X rod – 2 X long bolts 2X4mm. nuts 2X5mm.
nuts (to be used as washers/spacer)
- 1 X wiring loom
- 1 X motor
- 8-10 X cable ties
- Template for holes

2./ You will need the following tools :

- Screwdriver (to remove tailgate panel)
- Metric socket set (to remove tailgate handle)
- Soldering equipment
- Pliers (to crimp scotch lock wire connectors – optional)

3./ Open tailgate :

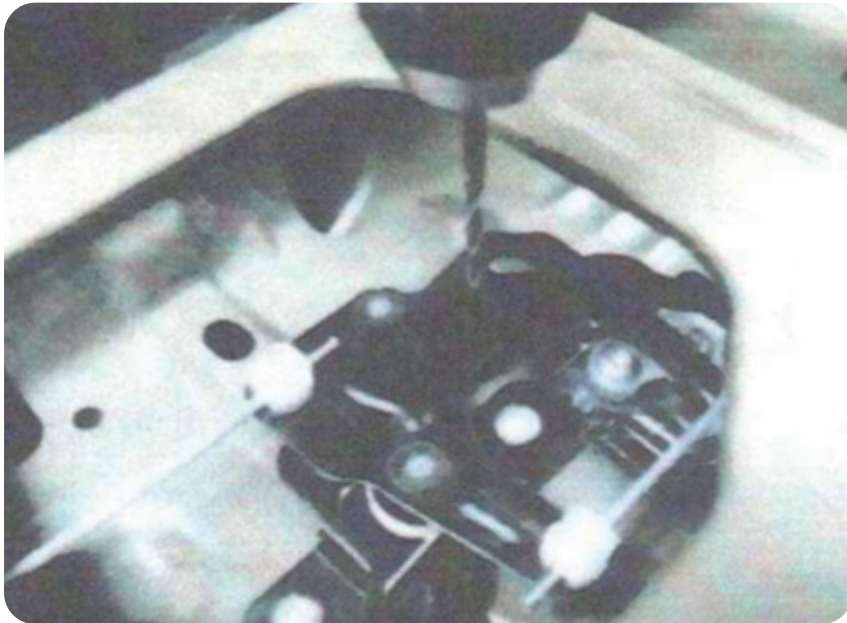
Undo 10 screws and remove metal panel to allow access into the inside of the tailgate.





CENTRALIZED TAILGATE LOCK SYSTEM FOR : FORD Ranger T6

4./ Drill a 4mm. hole in the center of the lock mechanism
(see picture)



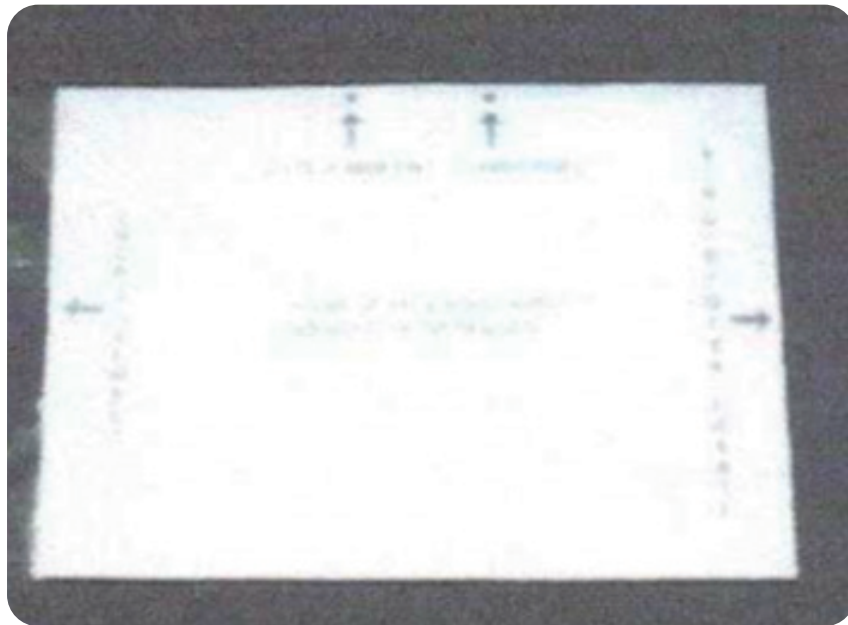
5./ 4mm. hole in lock mechanism.



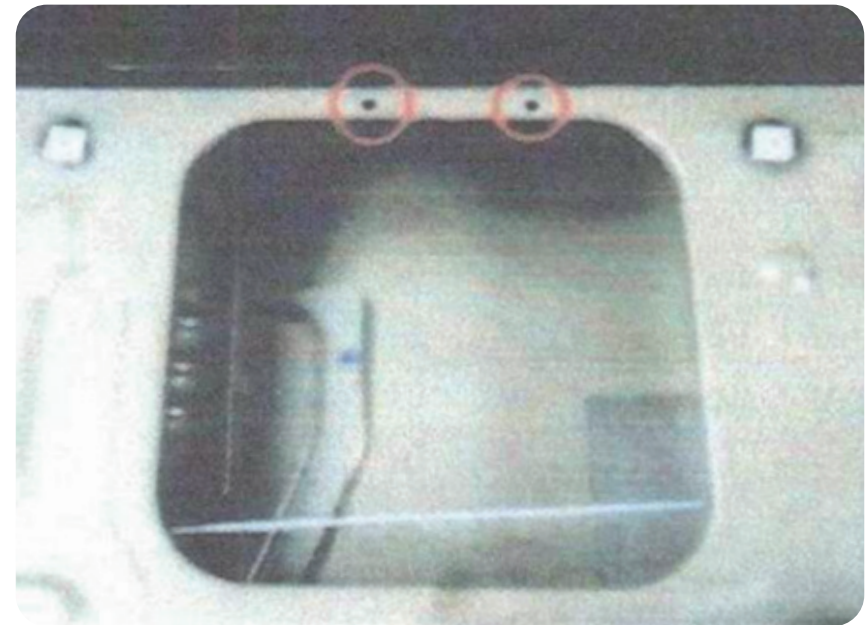


CENTRALIZED TAILGATE LOCK SYSTEM FOR : FORD Ranger T6

6./ Use the template provided to make holes required to mount the motor.



7./ Drill holes to mount the motor. Use a 4mm. drill piece.





CENTRALIZED TAILGATE LOCK SYSTEM FOR : FORD Ranger T6

8./ Attach the rod to the motor.



9./ Attach the other end of the rod to the lock mechanism.





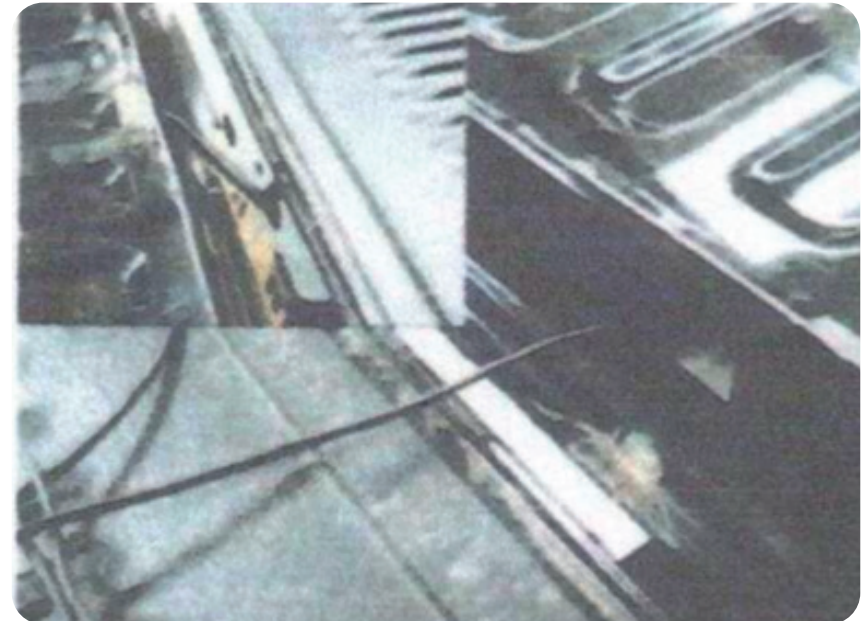
CENTRALIZED TAILGATE LOCK SYSTEM FOR : FORD Ranger T6

10./ Bolt the motor into place, please use the 5mm. nuts as washers/spacers on top of motor, tighten using 7mm. spanner and Philips head screwdriver or drill.



11./ Feed the wiring loom into the tailgate and attach the loom to the motor.

RED to Red & BLACK to Blue





CENTRALIZED TAILGATE LOCK SYSTEM FOR : FORD Ranger T6

12./ Feed the cable under the vehicle chassis to a grommet under the drivers seat, feed cable through grommet into the cab.



13./ Remove door sill guard on driver's side to gain access to vehicle's wiring loom.





CENTRALIZED TAILGATE LOCK SYSTEM FOR : FORD Ranger T6

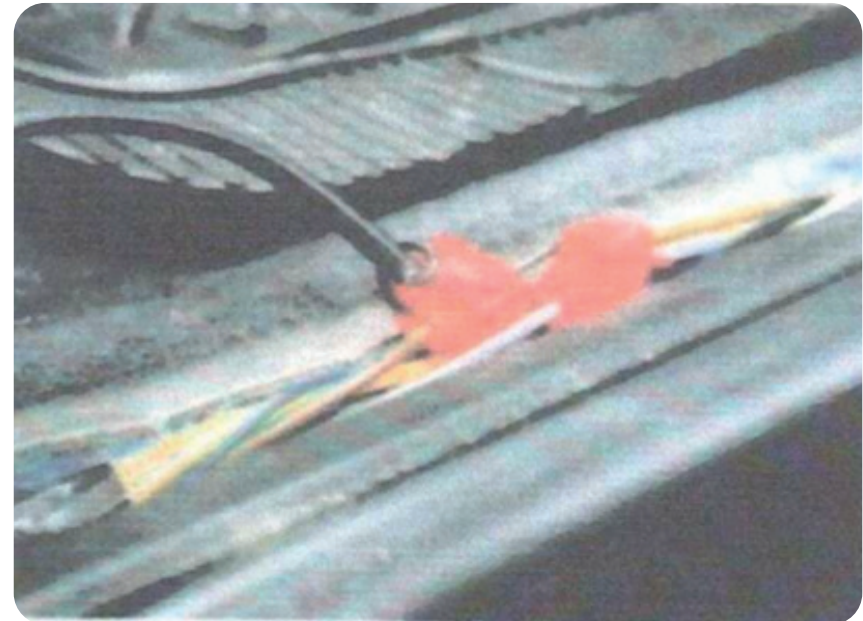
14./ Put you hand under the carpet to retrieve wire from the lock.



15./ Connect the wiring loom into vehicle electrics.

RED to Grey with **Brown** Trace

BLACK to **Brown** with **Green** Trace



16./ Test the kit by clicking the central locking and checking that the tailgate locks and unlocks.

Don't click continuously since the motor may over heat and fail.

We always advise to cover any connection with electrical tape.

If everything works replace door sill guard and tailgate cover.